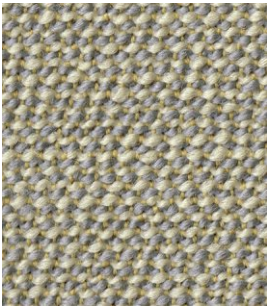




Arco

Cat. Extra

95 % Virgin wool - 5 % polyamide
Flame retardant - 52.000 Martindale



cloud



biber



coast



sepia



lanoso



black



ebony



muskat



fossil



taupe



flanell



calla



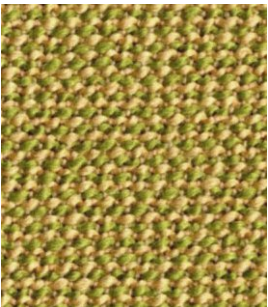
snow



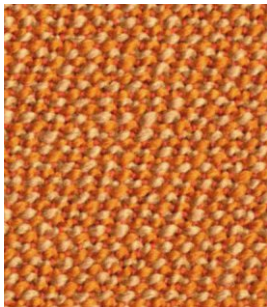
jasmin



bast



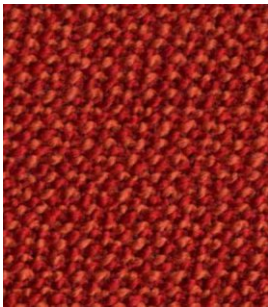
limette



safran



coral



granat



heart



blackberry



henna



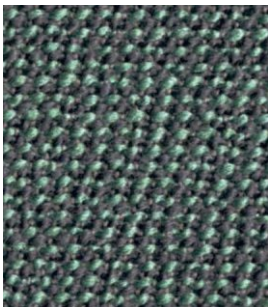
cassis



elegant



velvet



zinn



opal



monte

Technical details

| | |
|-----------------|---|
| Composition | 95 % Virgin wool - 5 % polyamide |
| Weight | Gr. / ml. 660 |
| Abrasion test | Martindale - UNI EN ISO 12947:2000 52.000 rubs |
| Lightfastness | Xenotest UNI EN ISO 105-B02: 5-8 |
| Flame retardant | FAR 25.853 (12 sec. vertical) CAL TB 117 - 2013 DIN 4102-1 B2 EN 13501-1 BS 5852:2006 (part1) BS 5852:2006 (part2) Crib5 |
| Characteristics | anti-shrink / anti-pilling / yarn dyed |
| Environment | RAL-UZ 117 Attachment 2+3 |